



# NIDA Clinical Trials Network: New York Node

Jennifer McNeely, MPI (NYU)

Edward Nunes, MPI (Columbia)

NYU Langone Health



## Clinical Trials Network (CTN)



Provides an enterprise in which NIDA, treatment researchers, and community-based service providers work toward new treatment options in community-level clinical practice.

<https://nida.nih.gov/organization/center-clinical-trials-network-cctn/clinical-trials-network-ctn>

# NIDA Clinical Trials Network

**BRIDGING  
THE GAP  
BETWEEN  
PRACTICE  
AND  
RESEARCH**

Forging Partnerships with Community-Based  
Drug and Alcohol Treatment

**INSTITUTE OF MEDICINE**



- Established in 1999
- Mission to improve addiction treatment nationally using science as the vehicle

<https://nida.nih.gov/organization/center-clinical-trials-network-cctn/clinical-trials-network-ctn>

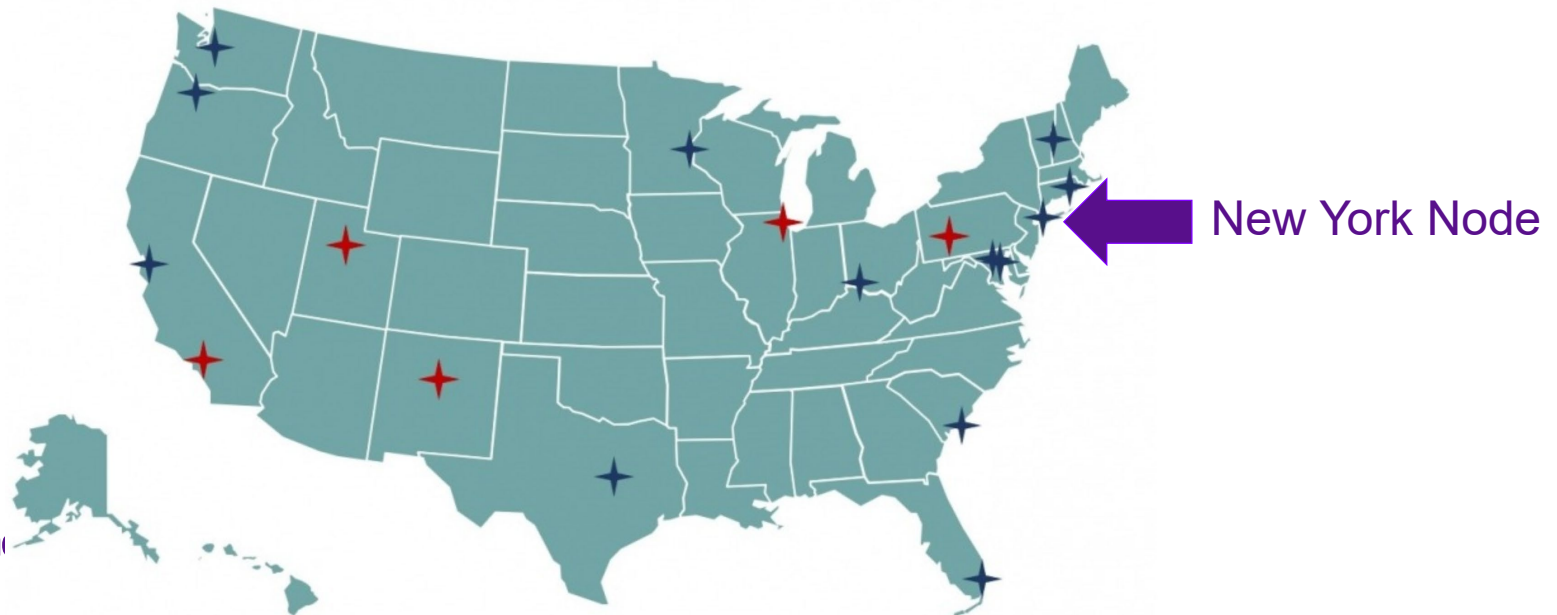
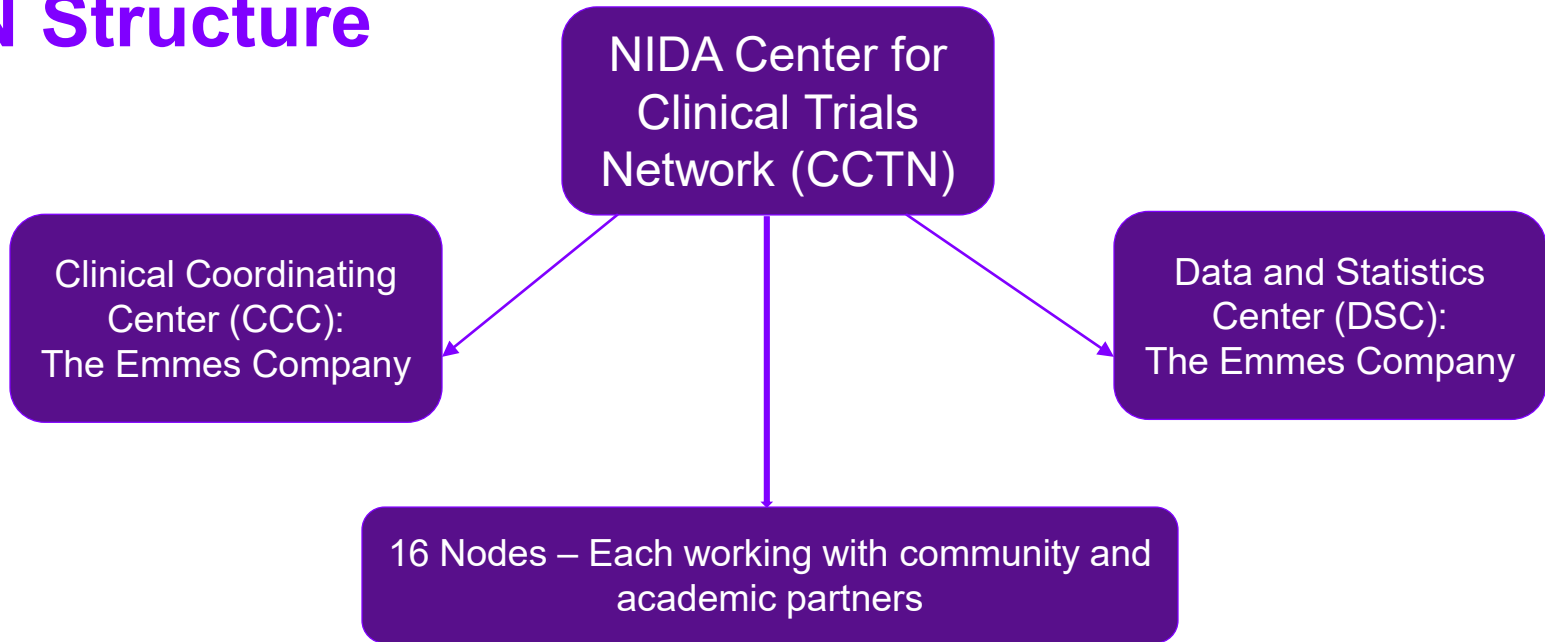
# CTN's research focus



<https://nida.nih.gov/about-nida/organization/cctn/ctn/research-studies>

- Over 150 funded studies
- Primarily rigorous multi-site clinical trials
- Testing new treatment models, behavioral therapies, and medications
- Improving the reach of evidence-based treatment across diverse treatment settings and participants
  - Community SUD treatment programs
  - Medical settings: primary care, ED, hospital
  - Evolving focus on minoritized and underserved populations, community-based work
- Provide a platform for related studies and training new investigators

# CTN Structure



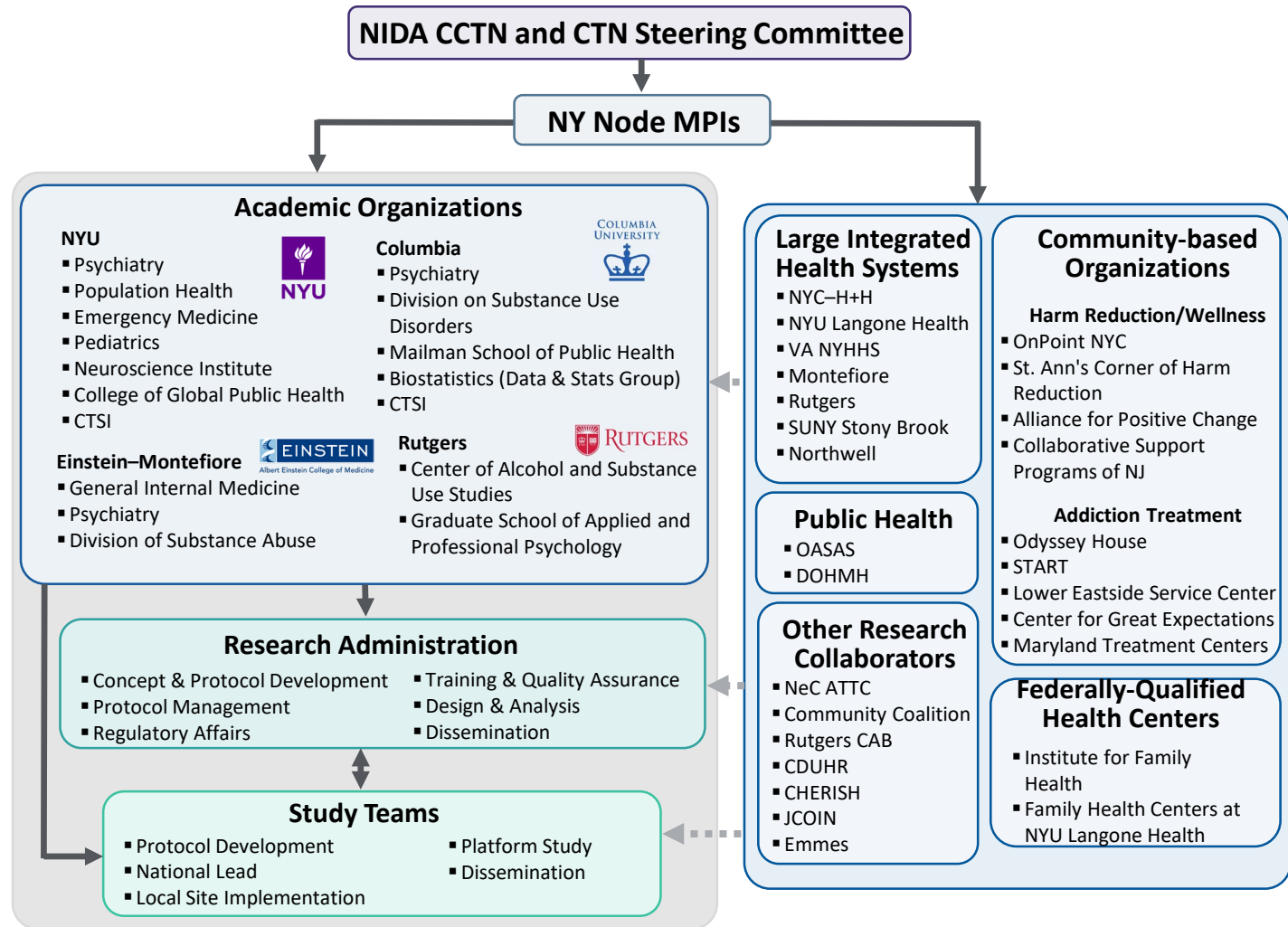
# CTN New York Node



COLUMBIA UNIVERSITY  
IRVING MEDICAL CENTER

- **One of the first CTN nodes, est. 2000**
- **Based at NYU and Columbia**
- **NYU MPI John Rotrosen – transitioned to Jennifer McNeely in July 2023**
- **Columbia MPIs Edward Nunes + Aimee Campbell**
- **Largest node in the network currently**
- **Lead node for 24+ trials**

# Organizational Chart 2025-2032



## How does research happen in the CTN?

- **Node provides basic infrastructure**
- **Individual studies funded through supplements**
- **The Node may lead or participate in studies**
- **Node works with investigators to develop and submit study concepts**
- **Concepts are reviewed by CTN Research Development Committee (monthly meeting)**
- **Funding decisions are based on CTN/NIDA priorities**



# Current studies in the CTN NY Node

- CTN-0096: Culturally Centering the Delivery of Medications for Opioid Disorder with AI/AN Communities (Tribal MOUD) – Venner, Campbell
- CTN-0100: Optimizing Retention, Duration, and Discontinuation Strategies for Opioid Use Disorder Pharmacotherapy (RDD) - Nunes, Weiss, Rotrosen
- CTN-0101: Subthreshold OUD Prevention Trial (STOP) - McNeely & Liebschutz
- CTN-0112: Optimal Policies to Improve Methadone Maintenance Adherence Long-Term (OPTIMMAL) – Williams & Krawczyk
- CTN-0125: Integrative Data Analysis of CTN Studies to Examine the Impact of Psychosocial Treatments for Black People who use Cocaine – Burlew & Ruglass
- CTN-0126: Longitudinal Follow-up of Individuals with OUD – Hefner, McHugh, Shulman
- CTN-0139: Collaborative Care for Polysubstance Use in Primary Care Settings (Co-Care) – McNeely & Liebschutz



## CTN Special Interest Groups (SIGs)

- **American Indian/Alaska Native (AIAN) SIG**
- **Comorbidities SIG**
- **Gender SIG**
- **Minority Interest Group (MIG)**
- **Primary Care SIG**
- **Rural SIG**
- **Telehealth & Telemedicine SIG**
- **Translation and Implementation SIG**
- **Youth SIG**

## **Aims of next grant cycle (2025-2032)**

- 1. Broaden the reach of SUD services to diverse populations, through low-barrier and community-based treatment models**
- 2. Integrate evidence-based addiction treatment in healthcare settings**
- 3. Increase SUD treatment effectiveness by addressing mental health comorbidities and polysubstance use**
- 4. Investigate novel treatments, including medications and digital therapeutics**
- 5. Use existing data to study interventions in real-world care settings and inform new research questions**
- 6. Train the next generation of addiction researchers**



# Thank you

Supporting text and  
contact information

NYU Langone Health

